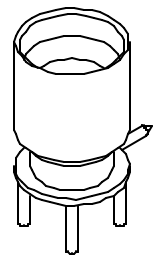
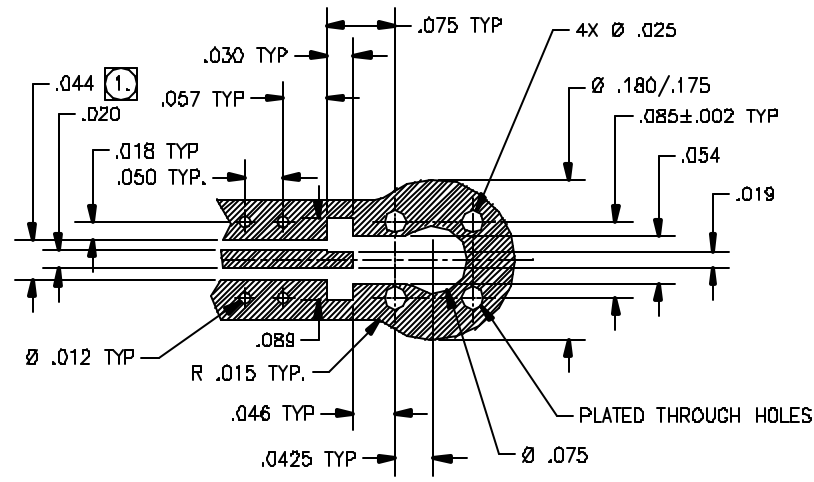


P/N	INTERFACE(S)	(Ø A)	(B)	FIGURE(S)
-1CC	FULL DETENT	(.116)	.075	1
-2CC	LIMITED DETENT	(.120)	.075	1
-3CC	SMOOTH BORE	(.125)	.075	1
-4CC	CATCHER'S MITT	(.125)	.075	2
-5CC	FULL DETENT	(.116)	.140	1
-6CC	LIMITED DETENT	(.120)	.140	1
-7CC	SMOOTH BORE	(.125)	.140	1
-8CC	CATCHER'S MITT	(.125)	.140	2

REVISIONS			
REV	DESCRIPTION	DATE	BY
G	ECO 13311	05.10.01	ATV
H	ECO 200B4	03.26.07	DKN
J	ECO 255B1	04.19.12	DKN



MOUNTING HOLE PATTERN

① DIMENSIONS SHOWN ARE FOR ROGERS 4350 PCB MATERIAL. THESE DIMENSIONS MAY VARY DEPENDING ON PCB MATERIAL USED.

MATERIAL:	ELECTRICAL:	MECHANICAL:	ENVIRONMENTAL:
Body: BeCu alloy per ASTM B-196. Center Conductor: Brass alloy per ASTM B-16. Insulator: Torlon per AMS 3670 or ASTM D-5204.	Impedance: 50 Ohms nominal. Frequency Range: DC to 18 GHz. VSWR: 1.15:1 max to 18 GHz. Insertion Loss: .10 dB max to 18 GHz. Working Voltage: 335 Vrms max @ sea level. Dielectric Withstanding Voltage: 500 Vrms min. R.F. HiPot Voltage: 325 Vrms min @ 5MHz. Corona Level: 125 Vrms @ 70,000 ft. Insulation Resistance: 50X10 MegOhms min. Contact Resistance: Center Contact: 6.0 Milliohm max. Outer Contact: 2.0 Milliohm max.	Mating Characteristics: Interface per Mil-Std-348. Force To Engage & Disengage: Engage: Full detent: 10.0 lbs max Limited detent: 5.0 max Smooth bore/Catchers mitt: 2.0 lbs max Disengage: Full detent: 2.0 lbs min Limited detent: 1.5 lbs min Smooth bore/Catchers mitt: .50 lbs min Center Contact Retention: Axial Force: 1.5 pounds min. Radial Torque: NA Connector Durability: Depend on detent	Temperature Range: -65°C to +165°C. Thermal Shock: Mil-Std-202, Method 107, Test Cond. B. Moisture Resistance: Mil-Std-202, Method 106, except step 7b shall be omitted. Insulation resistance at least 100D MegOhms within 5 minutes after removal from humidity. Corrosion: Mil-Std-202, Method 101, Test Cond. B. Vibration: Mil-Std-202, Method 204, Test Cond. D. Shock: Mil-Std-202, Method 213, Test Cond. I.

FINISH:
Body & Center Conductor: Gold plate per ASTM B-486, over nickel under plate per AMS-QQ-N-290.

APPLICABLE CARLSLE IT DOCUMENTS		
WORK STD	PROD INST	ASSY INST
NA	NA	NA

NOTICE

THIS DRAWING CARRIES A PROPERTY INTEREST WHICH IS RESERVED BY CARLSLE INTERCONNECT TECHNOLOGIES, CORP. ANY REPRODUCTION, USE AND SALE OF THIS DRAWING WITHOUT THE EXPRESS WRITTEN PERMISSION OF CARLSLE INTERCONNECT TECHNOLOGIES, CORP. IS PROHIBITED. ANY USE OF THIS DRAWING WITHOUT THE EXPRESS WRITTEN PERMISSION OF CARLSLE INTERCONNECT TECHNOLOGIES, CORP. IS PROHIBITED. ANY REPRODUCTION, USE AND SALE OF THIS DRAWING WITHOUT THE EXPRESS WRITTEN PERMISSION OF CARLSLE INTERCONNECT TECHNOLOGIES, CORP. IS PROHIBITED.

TOLERANCES AND NOTES EXCEPT AS NOTED	
UNLESS OTHERWISE SPECIFIED	UNLESS OTHERWISE SPECIFIED
LINEAR .003 2.00 ANGULAR ± 1/2° FINISH = 1/32	
1. MACHINED FINISH: 0.8/32	
2. BREAK ALL SHARP EDGES .004 MAX.	
3. MACHINED SURFACE: 0.005 MAX.	
4. UNFINISHED SURFACE: 0.010 MAX.	
5. UNFINISHED SURFACE: 0.010 MAX.	
6. UNFINISHED SURFACE: 0.010 MAX.	
7. UNFINISHED SURFACE: 0.010 MAX.	
8. UNFINISHED SURFACE: 0.010 MAX.	
9. UNFINISHED SURFACE: 0.010 MAX.	
10. UNFINISHED SURFACE: 0.010 MAX.	

APPROVAL DETAILS		DATE		SPECIFICATION		FIGUREMENT	
DRAWN BY	DKN	08.10.88					
CHECKED BY	PNAD	04.18.12					
TEST ENG							
QUALITY							
BEHNS BWS	JCB	03.26.07					
MFG ENGR							
ECO APPR	PNAD	04.19.12					

CARLSLE Interconnect Technologies
 Carlisle, PA 17015

SMP MALE STRAIGHT
 PCB SURFACE MOUNT

SCALE: 16:1
 IN-SET 1 OF 2

REV. J

4

3

2

1

D

D

SMP MALE
INTERFACE PER
MIL-STD-348

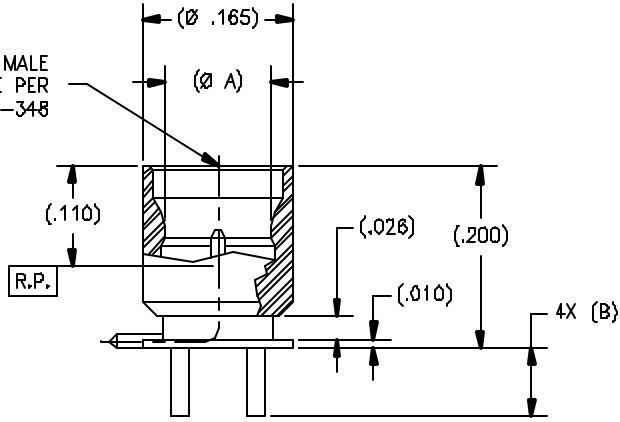
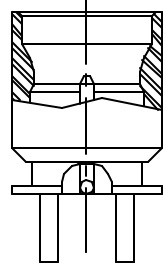


FIG. 1

C

C

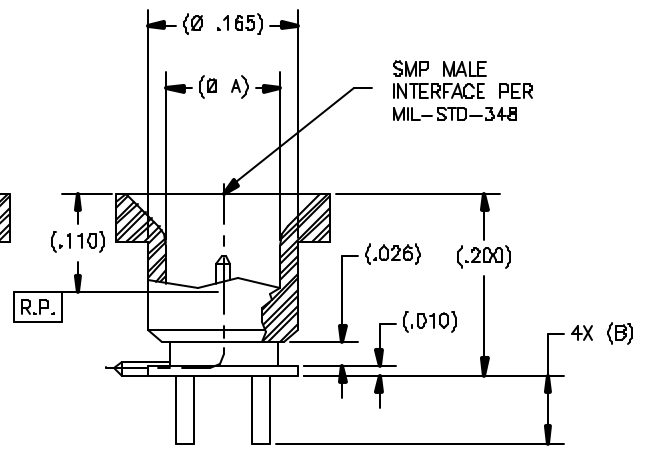
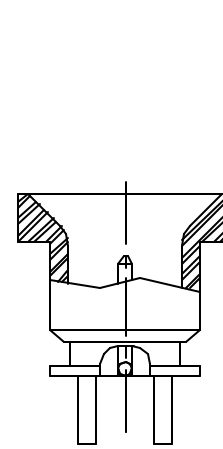
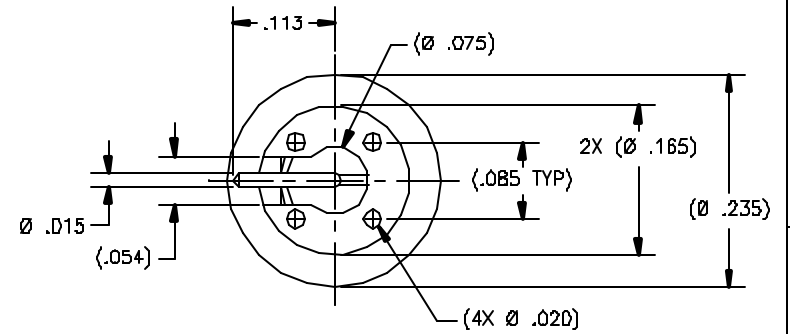
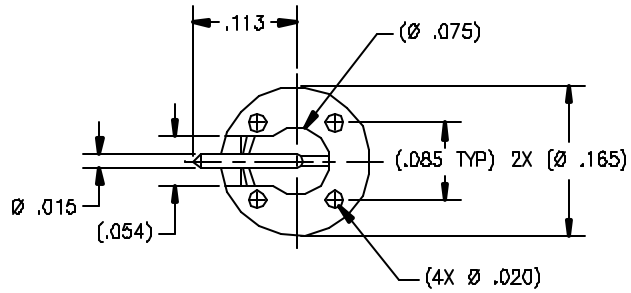


FIG. 2

B

B



A

A

SCALE	DIRECTION / SUB-DIRECTION	SHEET	OF
NONE	_OLP\	2	2
REV	DATE	DRAWING NO.	REV.
C	30990	P797	J